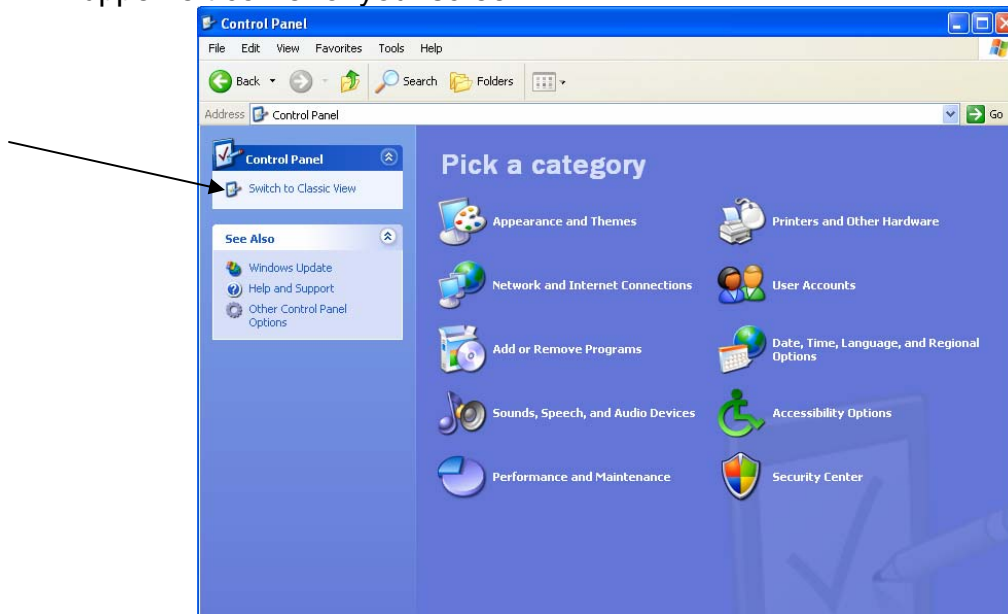


Almanet Internet Settings

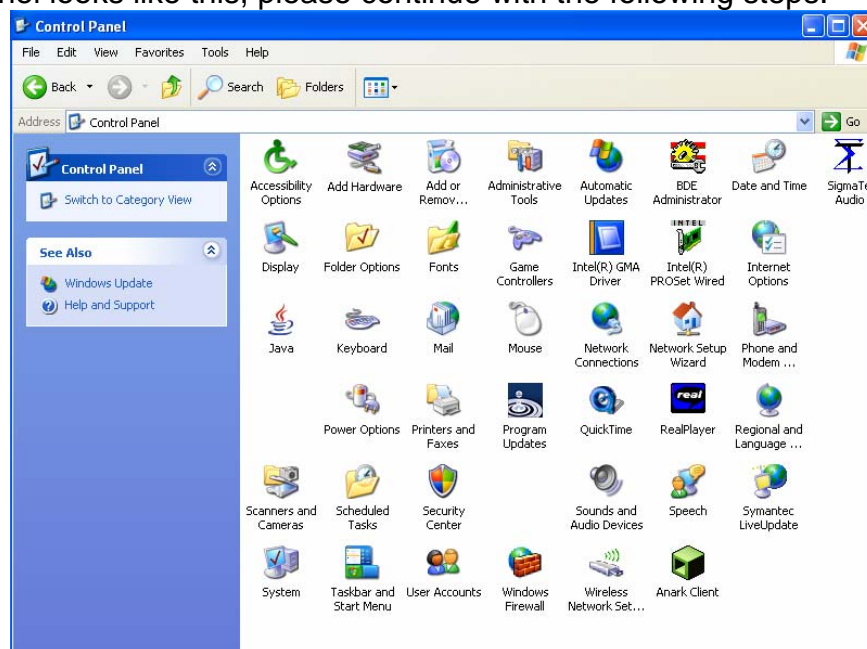
The following instructions will guide you through setting up Broadband Internet on your computer.

1. Click on the **Start** button at the bottom left-hand corner of the screen, go to **Control Panel** (If Control Panel is not available, click on **run** and type in "Control Panel" and press OK.)

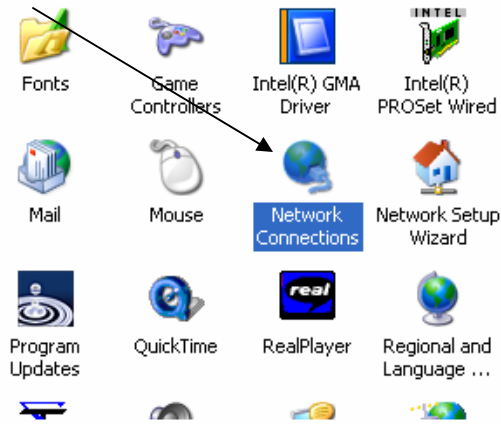
If Control Panel looks like this: Click the "**Switch to Classic View**" button in the upper left corner of your screen.



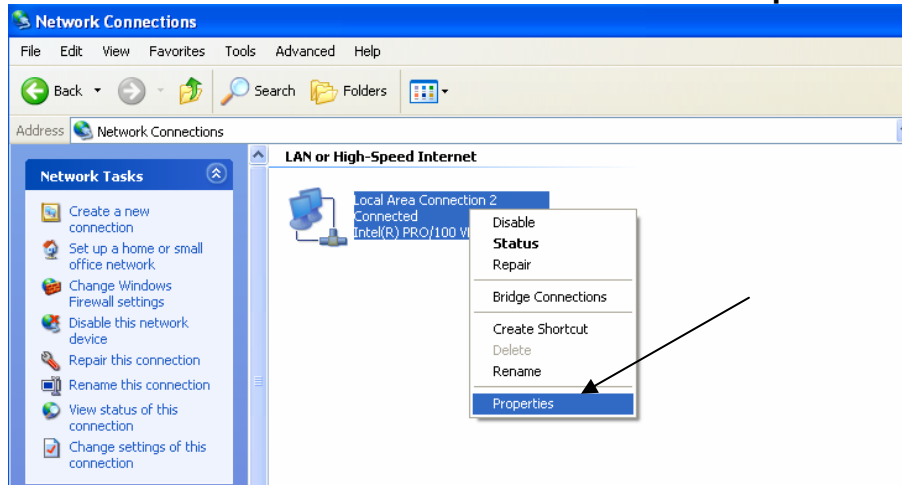
If Control Panel looks like this, please continue with the following steps.



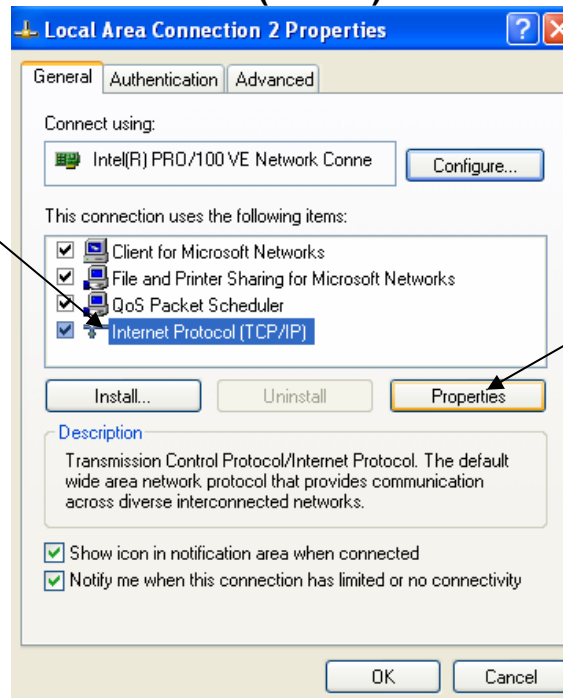
2. Select and open **Network Connections**.



3. Right Click on the **Local Area Connection** and select **Properties**.



4. Find and select **Internet Protocol (TCP/IP)** and select **Properties**.



5. Select **Use the following IP address:** and enter in the following information for the IP, Subnet Mask, Default Gateway, Preferred DNS server and Alternate DNS server. **(You will need to contact Alma Communications Company for the IP address as it is customer specific.)**

Internet Protocol (TCP/IP) Properties

General

You can get IP settings assigned automatically if your network supports this capability. Otherwise, you need to ask your network administrator for the appropriate IP settings.

Obtain an IP address automatically

Use the following IP address:

IP address: 64 . 111 . 34 .

Subnet mask: 255 . 255 . 255 . 0

Default gateway: 64 . 111 . 34 . 1

Obtain DNS server address automatically

Use the following DNS server addresses:

Preferred DNS server: 207 . 192 . 228 . 19

Alternate DNS server: 216 . 146 . 240 . 11

Advanced...

OK Cancel

6. Once all information has been entered click the **OK** button at the bottom right hand corner of the Internet Protocol (TCP/IP) Properties box.
7. Click the **OK** button on the bottom right corner of the Local Area Connection Properties.

Local Area Connection 2 Properties

General Authentication Advanced

Connect using:

Intel(R) PRO/100 VE Network Conne Configure...

This connection uses the following items:

Client for Microsoft Networks

File and Printer Sharing for Microsoft Networks

QoS Packet Scheduler

Internet Protocol (TCP/IP)

Install... Uninstall Properties

Description

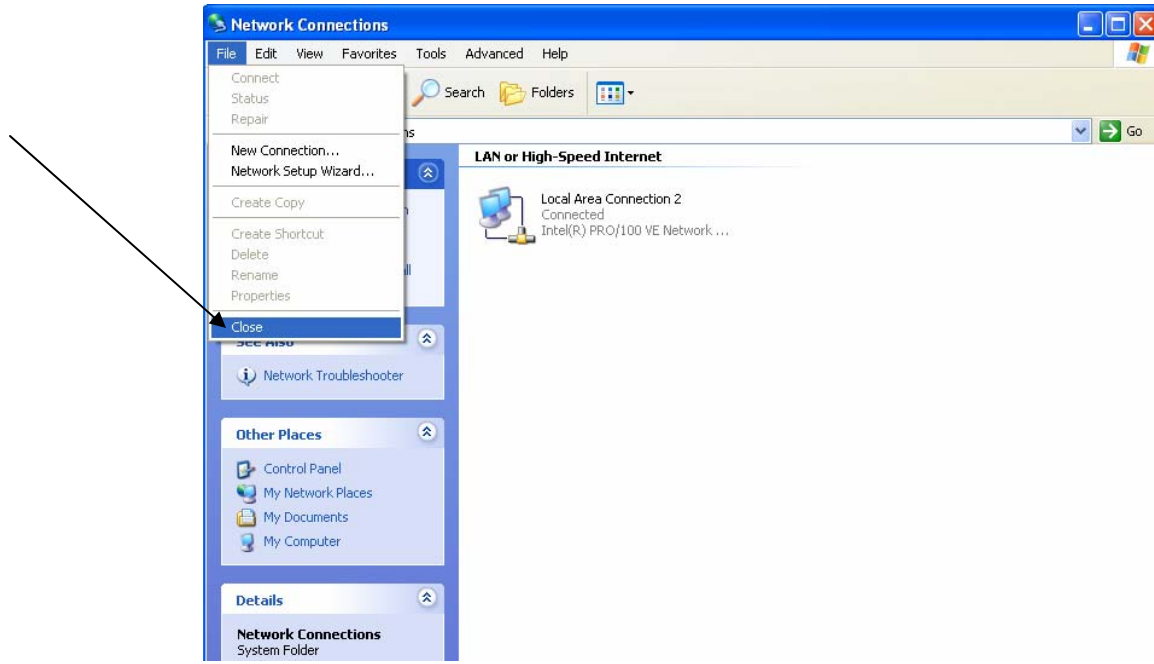
Transmission Control Protocol/Internet Protocol. The default wide area network protocol that provides communication across diverse interconnected networks.

Show icon in notification area when connected

Notify me when this connection has limited or no connectivity

OK Cancel

8. Close the Network Connections window.



9. Reboot your computer to ensure all devices are reset with the new settings.

10. You should now be able to access the internet and your email.

If you have any questions or comments please contact our office at 660-674-2297 or Toll Free at 1-888-371-6821.